

# Helly Hansen Skagen Race 2013

## SAILING INSTRUCTIONS

### Ascension Day week-end; May 8<sup>th</sup> – 10<sup>th</sup>, 2013 From Åsgårdstrand, Norway to Skagen, Denmark Bærum Seilforening

## 1 RULES

1.1 The regatta will be governed by the rules as defined in *The Racing Rules of Sailing*.

From sunset to sunrise the rules of Part 2 are replaced by the right-of-way rules of the Regulations for Preventing Collisions at Sea (IRPCAS).

1.2 ISAF “2012-2013 Offshore Special Regulations”, Category 3 will apply, with the following additions:

- Bilge pumps; minimum 2 manually operated.
- Fixed mounted VHF with 25 W effect
- VHF antenna must be mounted so that land based stations can be reached at any time
- For Shorthanded the following additions apply:
  - Heavy-weather jib and Main sail with 3 reefs (reduce the luff by at least 40%). (ISAF OSR 4.26.4.f/g)
  - at least one crew member must have NSF/ISAF approved “Offshore Personal Survival Training Course”, and
  - SRC/VHF certificate.
- Single crew boats are not permitted.

### 1.2.1 Exemption for shorthanded classes

Exemption will be given to the requirements in point 1.2 for skippers who have participated and completed 5 or more Skagen Races with regards to the NSF/ISAF approved “Offshore Personal Survival Training course” requirement.

1.3 Racing rule 52 (manual Power) does not apply.

1.4 If there is a conflict between languages the English text will take precedence.

## 2 NOTICES TO COMPETITORS

Notices to competitors before start will be posted on the official notice board located at the clubhouse in Åsgårdstrand, at least one hour prior to first start.

Notices to competitors after finishing will be posted on the official notice board at the Race Office located in “Auktionshallen” in Skagen.

## 3 CHANGES TO SAILING INSTRUCTIONS

Any change to the sailing instructions will be posted before 17:00 on the day it will take effect. Flag “L” will then be displayed at the clubhouse in Åsgårdstrand

## 4 SIGNALS MADE ASHORE

4.1 Signals made ashore will be displayed at signal-mast close to seaward approach to Northern Harbor in Åsgårdstrand.

4.2 When flag AP is displayed ashore, ‘1 minute’ is replaced with ‘not less than 45 minutes’ in the race signal AP.

### 5 SCHEDULE OF RACES

#### 5.1 Dates of racing:

- Start: May 8<sup>th</sup>

#### 5.2 The scheduled time of the warning signal for

- Shorthand classes: 17:50
- Other classes: 19.50
- Division of classes and scheduled starting times will be posted on [www.SEILmagasinet.no](http://www.SEILmagasinet.no) before the first registration day.

#### 5.3 Classes

##### 5.3.1 Touring

Boats without valid measurement certificate sail in Touring class. Race Committee changes from NOR Rating or ORC to Touring due to invalid measurement certificates are final and not ground for redress. This changes Rules 60.1 (b).

All boats in Touring must sail without spinnaker, and just one headsail (max 150% J) at any time connected to the forestay.

##### 5.3.2 NOR Rating with or without spinnaker

Boats sailing according to the NOR Rating-system will be placed in classes based on measurement rating, on Race Committee's discretion.

##### 5.3.3 ORC

Boats sailing according to the ORC-system will be placed in classes based on measurement rating, on Race Committee's discretion.

##### 5.3.4 Shorthanded NOR Rating.

Boats with a crew of 2 sailors must sail as "Shorthanded NOR Rating". Boats sailing according to the NOR Rating-system will be placed in classes based on measurement rating, on Race Committee's discretion.

### 6 CLASS FLAGS

Class flags will be posted together with division of classes on [www.SEILmagasinet.no](http://www.SEILmagasinet.no) before the first registration day. All boats shall display class flag in backstay.

### 7 RACING AREAS

Attachment A shows the course.

### 8 THE START

#### 8.1 Races will be started as follows:

Signal	Flag	Sound	Minutes before starting signal
Warning	Class flag	1 sound	10
Preparatory	P	1 sound	5
One-minute	Preparatory flag removed	1 long sound	1
Starting	Class flag removed	1 sound	0

The warning signal for each succeeding class shall be made with or after the starting signal of the preceding class. This changes rule 26.

# Helly Hansen Skagen Race 2013

## SAILING INSTRUCTIONS

- 8.2** The starting line will be between the Race Committee signal boat, outside Åsgårdstrand Harbor, displaying orange flag at the starboard end and a red HH bouy at the port end.
- 8.3** No boats shall enter starting area before warning signal. Boats waiting for their warning signal shall remain in designated waiting area. See Attachment B.
- 8.4** A boat starting later than 15 minutes after the last starting signal will be scored Did Not Start.  
This changes rule A4

## 9 THE COURSE

- 9.1** Course will not be shortened. This changes rule 32.
- 9.2** Legs of the course will not be changed after the preparatory signal. This changes rule 33.

## 10 REPORTING POINTS

No mark boats will be used. A missing or damaged mark will not give ground for redress. This changes rule 60.1 (b)

Racing boats shall complete Self Declaration Race Report. When passing each listed mark date, time, boats ahead and astern shall be registered (if possible).

Racing boats shall also transmit blind on VHF channel 72 sail-number, boat name and passing time when passing

- Skålholmen at Väderöerna
- Brofjordens Angöring

## 11 THE FINISH

Before and after passing finish line racing boats shall listen to VHF channel 72, for possible messages from Race Committee.

- 11.1** The finishing line will be between onshore flag pole displaying HH-flag outside “Engelsviken Canning” and red HH buoy at port side. Race Committee will try to add a white blinking light to the buoy.
- 11.2** Boats passing finish line at night shall show sail number using flash light and if necessary adjust sail accordingly.
- 11.3** Official finish time is registered by the Race Committee onshore.
- 11.4** If the Race Committee is absent when a boat finishes, she should report her finishing time, her position in relation to nearby boats, to the Race Committee at the first reasonable opportunity
- 11.5** Participating boats shall berth according to instructions from Race Committee or Skagen Harbor crew.  
See Attachment C for Satellite photo with detailed instructions.
- 11.6** Completed and signed Self Declaration Race Report and Self Declaration Safety Form must be delivered at the Race Committee Office in Skagen no later than 120 minutes after crossing the finishing line.

# Helly Hansen Skagen Race 2013

## SAILING INSTRUCTIONS

## 12 PENALTY SYSTEM

12.1 The penalties are as follows:

OCS	3% penalty breaking Rule 29.1
Identification on sails	5% penalty breaking Rule 77
Use of engine (except as indicated below)	3 % penalty
Reported use of engine for battery charging, without forward trust	No penalty
Reported use of engine to give way for commercial vessels	No penalty
Lack of electrical power to VHF and navigation lights	DSQ without hearing
Deviation between signed Self Declaration Safety Form and safety inspection reports, before or after the race.	1 – 3 % penalty or DSQ
Too late delivery of Self Declaration Race Report after finishing	DNF
Sailing west of E 10 ° 25.0' after passing of Brofjorden Angörning	DSQ

12.2 For all classes rules 44.1 and 44.2 are changed so that only one turn, including one tack and one gybe, is required.

12.3 Boats refusing to show up at safety inspection, or where the equipment is not in accordance with safety rules may be refused to start, or 1 – 3 % penalty or DSQ.

12.4 Protest Committee reserves the right to give penalty without hearing for any breach reported in Self Declaration Race Report. This changes the Rules in Part 5.

## 13 TIME LIMITS

Time limits are as follows:

<i>Class</i>	<i>Time limit</i>
All classes	Friday May 10 <sup>th</sup> , 12:00 CET

## 14 PROTESTS AND REQUESTS FOR REDRESS

14.1 Protest forms are available at the Race Office. Protests shall be delivered there within the protest time limit.

14.2 For each boat, the protest time limit is 120 minutes after the boat has crossed the finishing line.

14.3 Notices will be posted at the Race Office in Skagen to inform competitors of hearings in which they are parties or named as witnesses. The Race Committee will try to call the skipper by mobile phone to inform when to meet for the hearing. Hearings will be held in the jury room, located at “Pakhuset”, meeting room at 1<sup>st</sup> floor.

14.4 A request for reopening a hearing shall be delivered

- within the protest time limit if the part requesting reopening was informed of the decision;
- no later than 30 minutes after the part requesting reopening was informed of the decision.

This changes rule 66.

## 15 SCORING

The scoring systems are as follows:

- Cruising classes; Elapsed sailing time (no time correction)
- All NOR Rating classes; Corrected sailing time will be elapsed sailing time multiplied with the boats NOR Rating correction factor.
- ORC; Corrected sailing time will be (PLT \* Elapse time) - (PLD \* Distance).

### 16 SAFETY REGULATIONS

**A boat that retires from a race shall notify the Race Committee as soon as possible.**

<b>Registered boats, not starting</b> shall report this to	
Race Committee in Åsgårdstrand; Anne-Grethe Sætrang	(+47) 958 51 399
Race Officer: Christian Gundersen	(+47) 920 44 448
<b>Boats retiring from the race</b> , shall report this <b>immediately</b> to	
Race Committee in Skagen:	(+47) 926 33 574
Race Officer: Christian Gundersen	(+47) 920 44 448

Boats outside mobile connection range must report retiring from the race using VHF coastal radio reaching one of the phone numbers above. When reporting retiring, crew member must be assured that Race Committee in Skagen has received the boat's name and sail number.

*Boats not finishing or reporting retiring can be financial liable for SAR cost.*

### 17 REPLACEMENT OF CREW OR EQUIPMENT

Substitution of competitors will not be allowed without submission of updated Crew list on the online registrations system at [www.SEILmagasinet.no](http://www.SEILmagasinet.no) before start.

### 18 EQUIPMENT AND MEASUREMENT CHECKS

A boat or equipment may be inspected at any time for compliance with the class rules and sailing instructions.

### 19 OFFICIAL BOATS

Official boats will be marked with Helly Hansen logos.

### 20 SUPPORT BOATS

Team leaders, coaches and other support personnel shall stay outside areas where boats are racing from the time of the preparatory signal for the first class to start until all boats have finished or the Race Committee signals a postponement, general recall or abandonment.

### 21 PRESS

Event sponsors press crew can embark and disembark racing boats at any time. Any boats use of engine in this process will not be subject to penalties.

### 22 PRIZES

Prize ceremony will take place in Skagen Harbor, "Auktionshallen", Friday May 18<sup>th</sup>, approx. at 16:00

### 23 DISCLAIMER OF LIABILITY

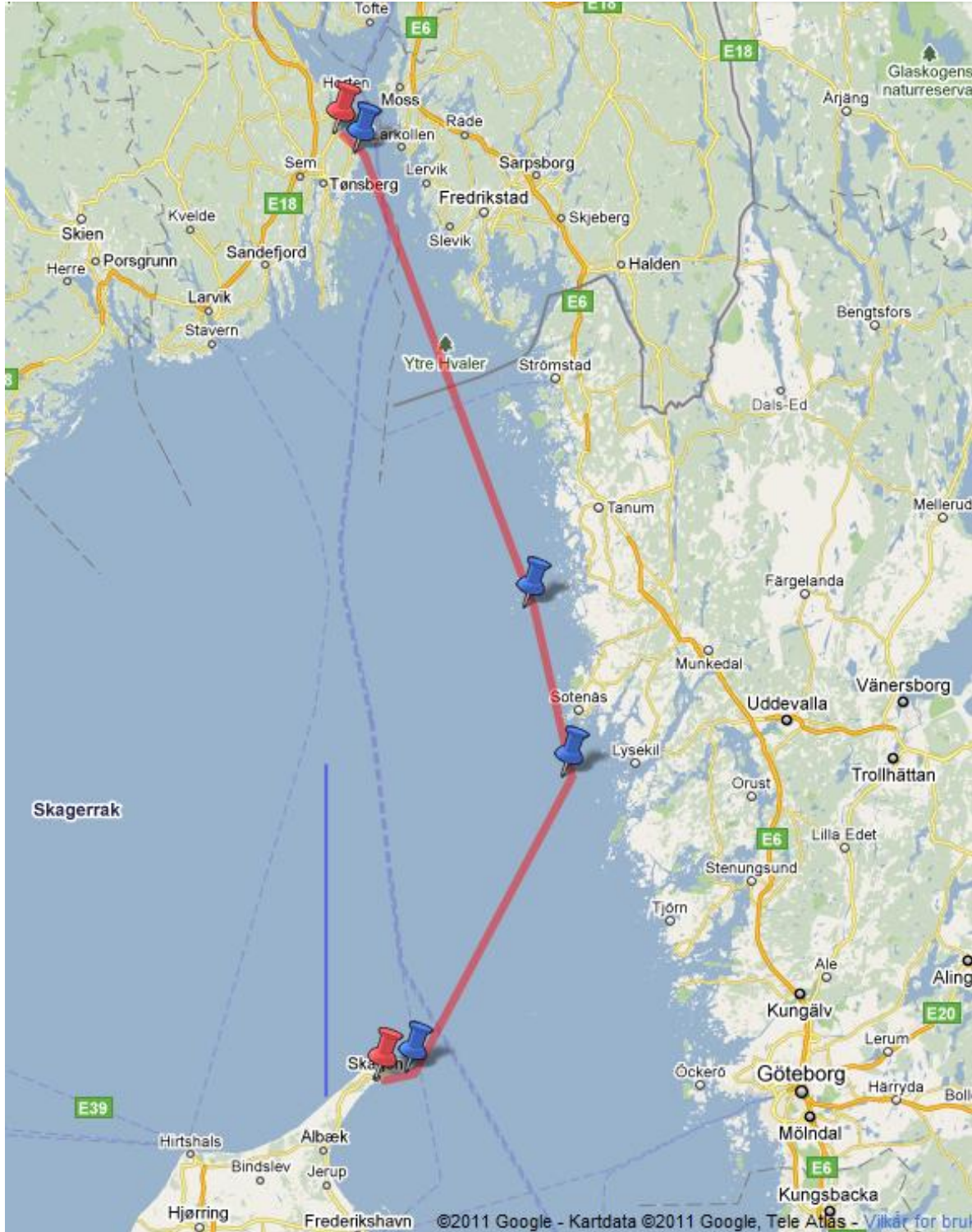
Competitors participate in the regatta entirely at their own risk. See rule 4, Decision to Race. The organizing authority will not accept any liability for material damage or personal injury or death sustained in conjunction with or prior to, during, or after the regatta.

### 24 INSURANCE

Each participating boat shall be insured with valid third-party liability insurance.

### ATTACHMENT A

#### Course

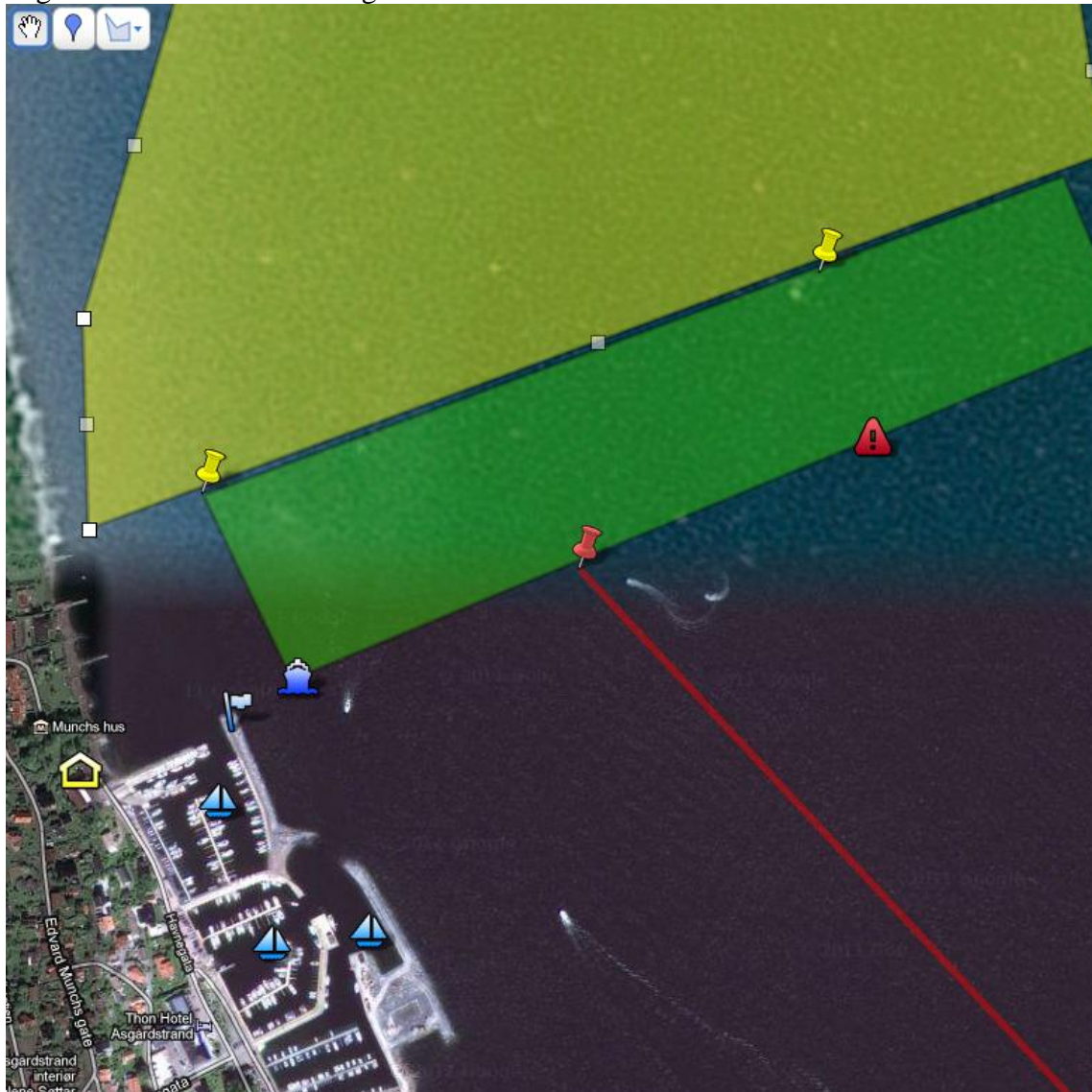


Link to this map:

<http://maps.google.no/maps/ms?ie=UTF8&hl=no&msa=0&msid=205832166540482221137.00049fc2879e8ebfc865f&ll=58.539595,10.557861&spn=2.093055,4.53186&z=8>

### ATTACHMENT B

Åsgårdstrand harbor / starting area:



-  Signal mast
-  Race committee signal boat
-  Red HH boy
-  Orange cylinder boy
-  Orange cylinder boy
-  Starting area
-  Waiting area
-  Northern harbor
-  Mid harbor
-  Guest harbor
-  Club house

- Do not enter starting area before 10 minutes prior your start.
- If you are leaving Mid or Guest harbour while other classes are starting, go between molo with Signal Mast and Race Committee signal boat to the Waiting area.



Bærum Seilforening

# Helly Hansen Skagen Race 2013

## SAILING INSTRUCTIONS

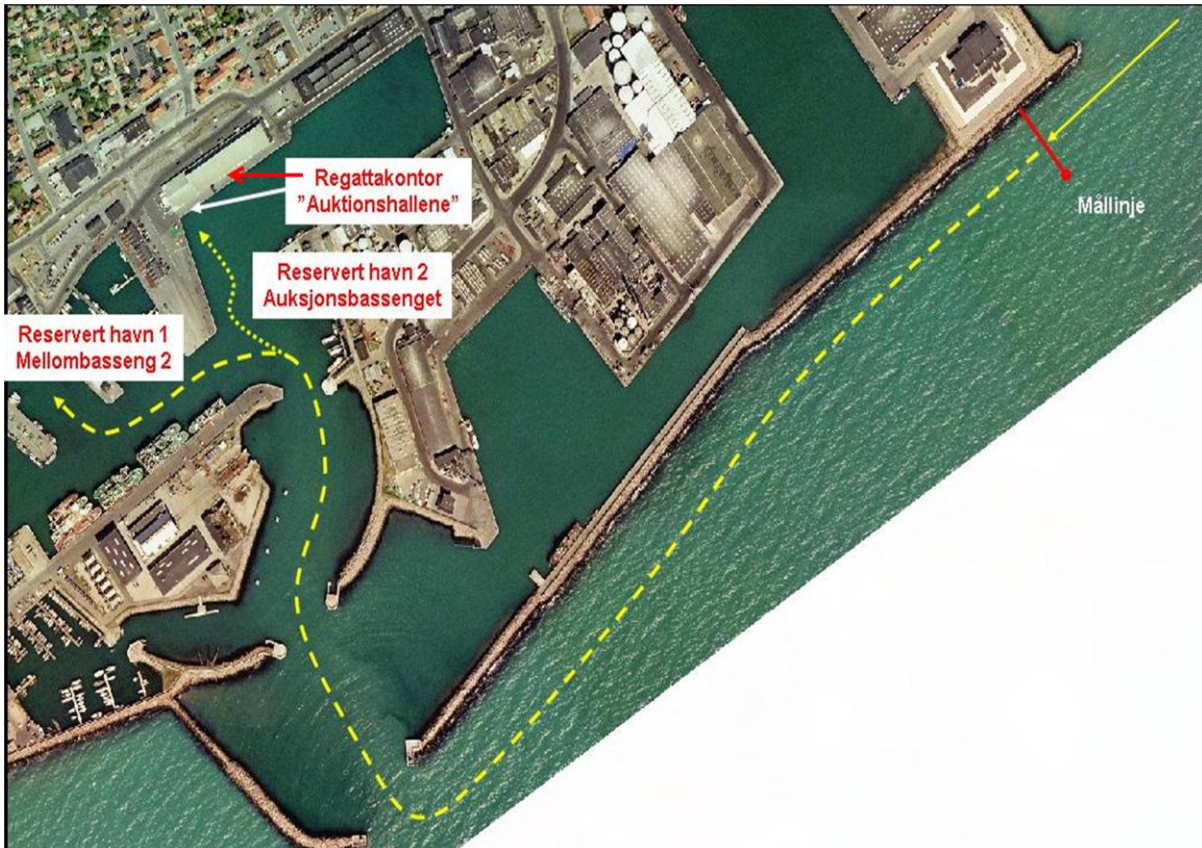


Link to this satellite photo:

<http://maps.google.com/maps/ms?ie=UTF8&hl=en&msa=0&msid=205832166540482221137.00049fc2879e8ebfc865f&ll=59.353562,10.475721&spn=0.008761,0.021222&t=h&z=16>

### ATTACHMENT C

Skagen Harbor



Finish line = **Mållinje**

Reseverd harbors are "**Mellombasseng 2**" and "**Auksjonsbassenget**"

- *If you are planning to leave before Saturday;*
  - *Thursday after finish or on*
  - *Friday*
- *then go to "Auksjonsbassenget"*

Race Committee Office = **Regattakontor** – 50 m passed "**Auktionshallene**" - > see red arrow  
Price Giving Ceremony = "**Auktionshallene**"