



NORWEGIAN CUP (NORGESCUP)

FOR 29er, EUROPE, RS-FEVA, ZOOM8
LASER STD., LASER 4.7, LASER RADIAL
BIC T293, RS:X & FORMULA BOARDS

And

EURO CUP 2014

FOR ZOOM8

OSLO, 6th - 7th SEPTEMBER 2014

SAILING INSTRUCTIONS

Organising authority:

Royal Norwegian Yacht Club

in cooperation with

Bærum Yacht Club

1 RULES

- 1.1** The regatta will be governed by the rules as defined in *The Racing Rules of Sailing*.
- 1.2** The Norwegian Sailing Federation's general and special rules for Norwegian Cup will apply.
- 1.3** Racing Rule 40 will be changed so that competitors shall wear personal flotation devices at all times while afloat without flag 'Y' displayed. This rule change will not apply for the RS:X class.
- 1.4** Appendix P will apply with changes as described in Section 13.1. For BIC T293, RS:X and Formula Boards classes the changes described in Racing Rules Appendix B will apply
- 1.5** For the Europe and Zoom8 classes only, Racing Rule 42.2 will be changed to allow pumping, rocking and ooching when signalled by the Race Committee. The signals will be made according to Racing Rule P5 using flags 'O' and 'R'.
- 1.6** Racing Rule 63.7 will be changed as follows: If there is a conflict between a rule in the Notice of Race and the Sailing Instructions then the rule in the Sailing Instructions will take precedence.

2 NOTICES TO COMPETITORS

Notices to competitors will be posted on the official notice board located at KNS Sailsport Centre.

3 CHANGES TO SAILING INSTRUCTIONS

Any change to the sailing instructions will be posted before 09:00 hrs. on the day it will take effect, except that any change to the schedule of races will be posted by 20:00 hrs. on the day before it will take effect.

4 REGISTRATION / EQUIPMENT INSPECTION

- 4.1** Competitors shall register at the race office and complete all required registration and equipment inspection formalities before racing.
- 4.2** Each boat shall produce a self-declaration of compliance with class rules on the form approved by the respective class clubs.

5 SIGNALS MADE ASHORE

5.1 Signals made ashore will be displayed at KNS Sailsport Centre.

5.2 When flag AP is displayed ashore, '1 minute' is replaced with 'not less than 60 minutes' in the race signal AP.

6 SCHEDULE OF RACES

6.1 Programme

Date (2014)	Description	Time
Friday 5 th September	Registration	17:00 – 22:00
Saturday 6 th September	Registration	08:00 – 09:30
Saturday 6 th September	Opening Ceremony and Competitor Briefing	09:30 – 09:45
Saturday 6 th September	Warning signal first race all classes	11:00
Sunday 7 th September	Competitor briefing	09:30 – 09:45
Sunday 7 th September	Warning signal first race all classes	11:00
No warning signal will be made after 15:00 hrs. on Sunday 7 th September.		

6.2 Number of races:

Class	Maximum number of races per day	Total races
29er	5	9
RS-Feva	5	8
Zoom 8	4	6
Europe	4	6
BIC T293	5	10
RS-X	5	10
Formula Boards	5	10
Laser (all classes)	4	6

One extra race per day may be sailed, provided that no class becomes more than one race ahead of schedule and the change is made according to instruction 3.

- 6.3** To alert boats that a race or sequence of races will begin soon, the orange starting line flag will be displayed with one sound at least five minutes before a warning signal is made.

7 CLASS FLAGS

Class	Race area	Flag
29er	1	D
RS-Feva	1	E
Zoom8	2	D
Europe	2	G
BIC T293 U13	3	D
BIC T293 U15	3	E
BIC T293 U17	3	E
RS-X	3	F
Formula Boards	3	G
Laser Std.	4	D
Laser Radial	4	E
Laser 4.7	4	F

8 RACING AREAS

Attachment A shows the location of the racing areas.

9 THE COURSES

- 9.1** The diagrams in Attachment B show the courses, including the approximate angles between legs, the order in which marks are to be passed, and the side on which each mark is to be left
- 9.2** Legs of the course will not be changed after the preparatory signal. This changes Rule 33.

10 MARKS

Marks are described in Attachment B.

11 THE START

- 11.1** Races will be started by using Rule 26 with the warning signal made 5 minutes before the starting signal.
- 11.2** The starting marks will be a race committee boat and a staff buoy with flag. The starting line will be between orange flags on the starting marks.
- 11.3** Boats whose warning signal has not been made shall avoid the starting area during the starting sequence for other races.
- 11.4** A boat starting later than 4 minutes after her starting signal will be scored Did Not Start without a hearing. This changes Rules A4 and A5.
- 11.5** If flag U has been displayed as the preparatory signal, no part of a boat's hull, crew, or equipment shall be in the triangle formed by the ends of the starting line and the first mark during the last minute before her starting signal. If a boat breaks this rule and is identified, she shall be disqualified without a hearing but not if the race is restarted or resailed or postponed or abandoned before the starting signal. This changes Rule 26.

12 THE FINISH

- 12.1** The finishing line will be between a blue flag on the committee boat and an orange buoy. For BIC T293, RS:X and Formula Boards classes the finishing line will be between blue flags on the finishing marks.

13 PENALTY SYSTEM

- 13.1** Appendix P will apply as changed by instructions 13.2 and 13.3.
- 13.2** Rule P2.3 will not apply and Rule P2.2 is changed so that it will apply to any penalty after the first one.
- 13.3** For the 29er and RS-Feva classes Rule 44.1 is changed so that the Two-Turns Penalty is replaced by the One-Turn Penalty.

14 TIME LIMITS AND TARGET TIMES

14.1 Time limits and target times are as follows:

Class	Time limit (minutes)	Target time (minutes)
29er	45	30
RS-Feva	45	30
Zoom8	90	45
Europe	90	45
BIC T293	45	25
RS-X	45	25
Formula Boards	45	25
Laser (all classes)	90	45

Failure to meet the target time will not be grounds for redress. This changes Rule 62.1(a).

14.2 Boats failing to finish within 20 minutes after the first boat sails the course and finishes will be scored Did Not Finish without a hearing. This changes Rules 35, A4 and A5.

15 PROTESTS AND REQUESTS FOR REDRESS

15.1 Protest forms are available at the race office. Protests and requests for redress or reopening shall be delivered there within the appropriate time limit.

15.2 For each class, the protest time limit is 90 minutes after the last boat has finished the last race of the day or the race committee signals no more racing today, whichever is later.

15.3 Notices will be posted no later than 30 minutes after the protest time limit to inform competitors of hearings in which they are parties or named as witnesses. Hearings will be held in the protest room, located at KNS Sailsport Centre, beginning at the time posted.

15.4 Notices of protests by the race committee or protest committee will be posted to inform boats under Rule 61.1(b).

15.5 A list of boats that, under instruction 13.1, have been penalized for breaking Rule 42 will be posted.

15.6 Breaches of instructions 11.3, 17, 20, 22, 23, and 24 will not be grounds for a protest by a boat. This changes Rule 60.1(a). Penalties for these breaches may be less than disqualification if the protest committee so decides.

15.7 On the last scheduled day of racing a request for reopening a hearing shall be delivered:

- a) within the protest time limit if the requesting party was informed of the decision on the previous day;
- b) no later than 30 minutes after the requesting party was informed of the decision on that day.

This changes Rule 66.

15.8 On the last scheduled day of racing a request for redress based on a protest committee decision shall be delivered no later than 30 minutes after the decision was posted. This changes Rule 62.2.

15.9 Decisions of the protest committee will be final as provided in Rule 70.5.

16 SCORING

16.1 Two (2) races are required to be completed to constitute a series.

16.2 Series scores.

A boat's series score will be the total of her race scores.

For Laser, Zoom8 and Europe classes:

When 4 or more races have been completed, a boat's series score will be the total of her race scores excluding her worst score.

For 29er, Feva, BIC T293, RS:X and Formula Boards classes:

When 5 or more races have been completed, a boat's series score will be the total of her race scores excluding her worst score.

For 29er class:

When 9 races have been completed, a boat's series score will be the total of her race scores excluding her two worst scores.

17 SAFETY REGULATIONS

A boat that retires from a race shall notify the race committee as soon as possible.

18 REPLACEMENT OF CREW OR EQUIPMENT

Substitution of damaged or lost equipment will not be allowed unless authorized by the race committee. Requests for substitution shall be made to the committee at the first reasonable opportunity.

19 EQUIPMENT AND MEASUREMENT CHECKS

A boat or equipment may be inspected at any time at the discretion of the class representative, race committee or the jury for compliance with the class rules and sailing instructions. On the water, a boat can be instructed by a race committee equipment inspector or measurer to proceed immediately to a designated area for inspection.

20 EVENT ADVERTISING

Boats shall display event advertising supplied by the organizing authority.

21 OFFICIAL BOATS

Official boats will be marked. Rescue boats will display a white flag. Race committee boats will display a white flag with 'C' written in black. Jury boats will display a blue flag with the word 'Jury' written in black.

22 SUPPORT BOATS

22.1 Team leaders, coaches and other support personnel shall stay outside areas where boats are racing from the time of the preparatory signal for the first class to start until all boats have finished or retired or the race committee signals a postponement, general recall or abandonment.

22.2 Support boats shall be marked as required by the race committee.

23 TRASH DISPOSAL

Trash may be placed aboard support or official boats.

24 RADIO COMMUNICATION

Except in an emergency, a boat shall neither make radio transmissions while racing nor receive radio communications not available to all boats. This restriction also applies to mobile telephones.

25 PRIZES

Prizes will be given as follows: One third of boats in each class will be awarded a prize.

26 DISCLAIMER OF LIABILITY

Competitors participate in the regatta entirely at their own risk. See Rule 4, Decision to Race. The organizing authority will not accept any liability for material damage or personal injury or death sustained in conjunction with or prior to, during, or after the regatta.

27 INSURANCE

Norwegian competitors and participating boats registered in Norway shall have a current licence issued by the Norwegian Sailing Federation and comply with NSF licence rules. All participating boats shall be insured with valid third-party liability insurance with a minimum cover of EUR 500 000 per incident or the equivalent.

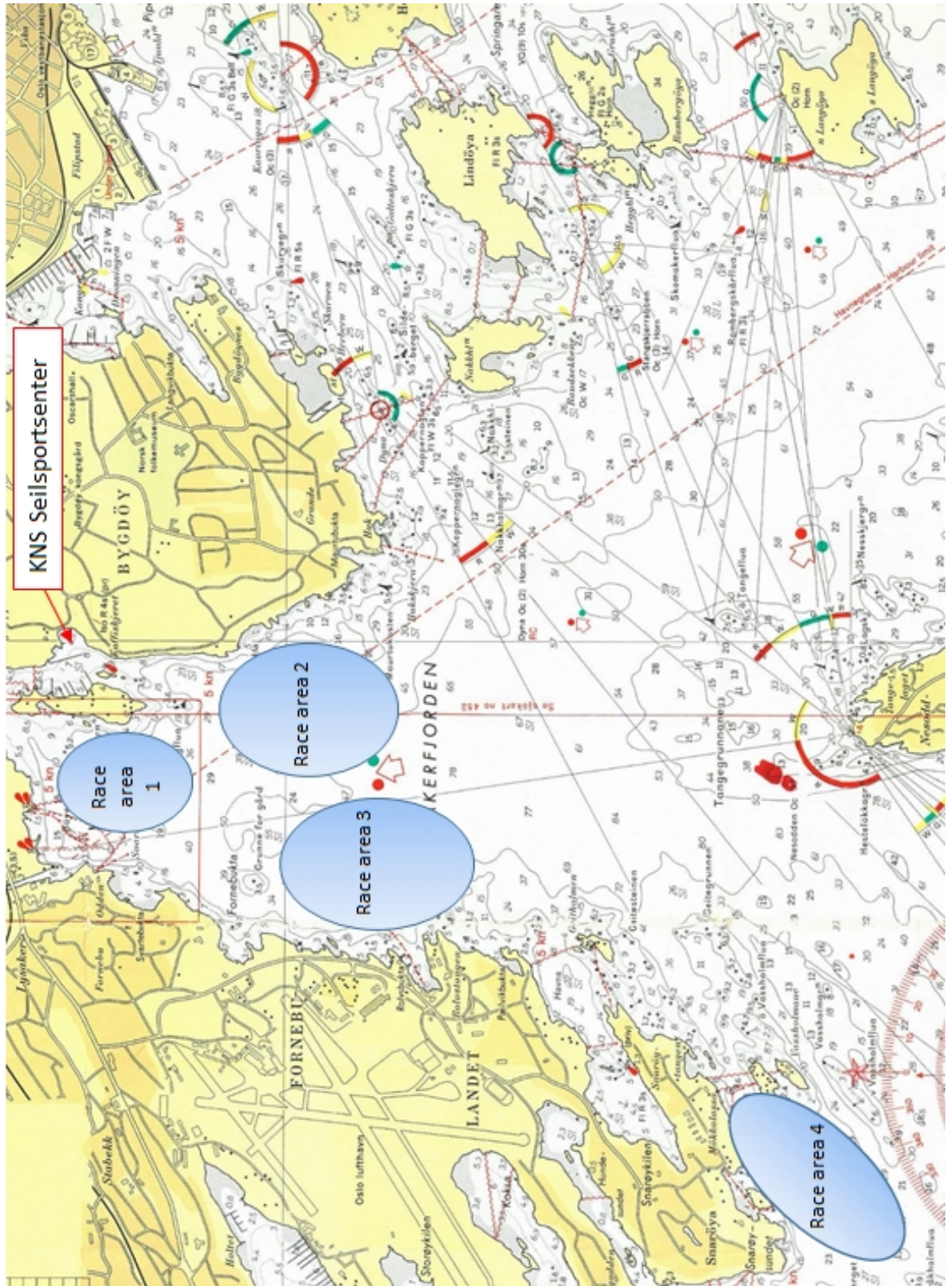
Attachment A - Location of the racing areas



Baneområder Lysakerfjorden NC



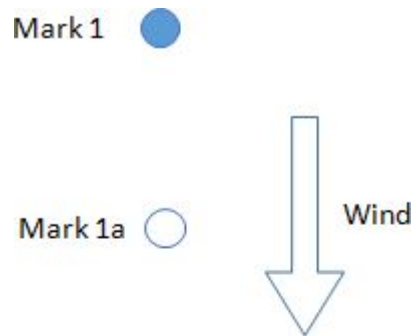
Bærum Seilforening



Attachment B - The courses

B.1 Racing Area 1 (29er and RS-Feva)

Marks: Red inflatable buoys, except Mark 1a – white inflatable buoy.



If *numeral 1* flag is shown together with the warning signal the following course shall be sailed:

Start – 1 – 2a or 2b – 1 – finish.

If *numeral 2* flag is shown together with the warning signal the following course shall be sailed:

Start – 1 – 2a or 2b – 1 – 2a or 2b – 1 – finish.

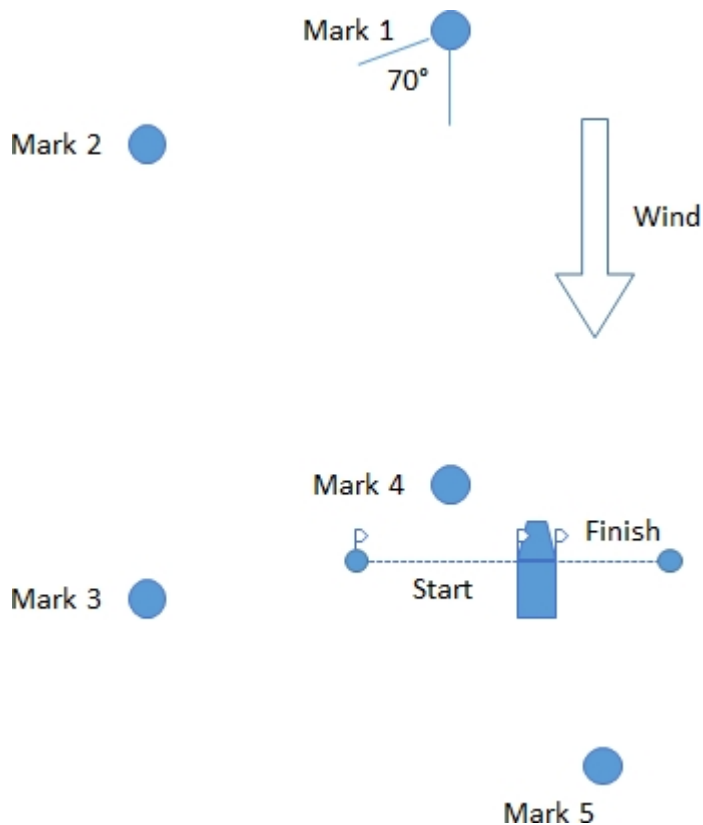
And so on for *numeral 3 – 6* flags

RS-Feva shall round Mark 1a instead of Mark 1.

Marks 1 and 1a shall be rounded to port. If either Mark 2a or 2b is missing then remaining mark shall be rounded to port.

B.2 Race Area 2 (Zoom8 and Europe)

Marks: Orange inflatable buoys.



If *numeral 1* flag is shown together with the warning signal the outer loop course shall be sailed:

Start – 1 – 2 – 3 – 2 – 3 – 5 – finish

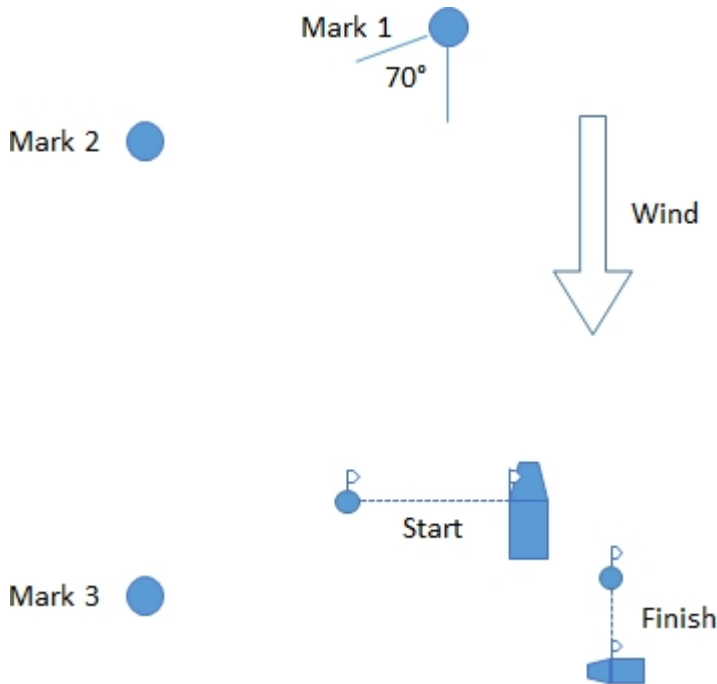
If *numeral 2* flag is shown together with the warning signal the inner loop course shall be sailed:

Start – 1 – 4 – 1 – 2 – 3 – 5 – finish

All marks shall be rounded to port.

B.3 Racing Area 3 (BIC T293, RS:X & FORMULA BOARDS)

Marks: Yellow inflatable pin buoys.



If no *numeral* flag is shown the following course shall be sailed:
Start – 1 – 2 – 3 – finish.

If *numeral 1* flag is shown together with the warning signal the following course shall be sailed:
Start – 1 – 2 – 3 – 2 – 3 – finish.

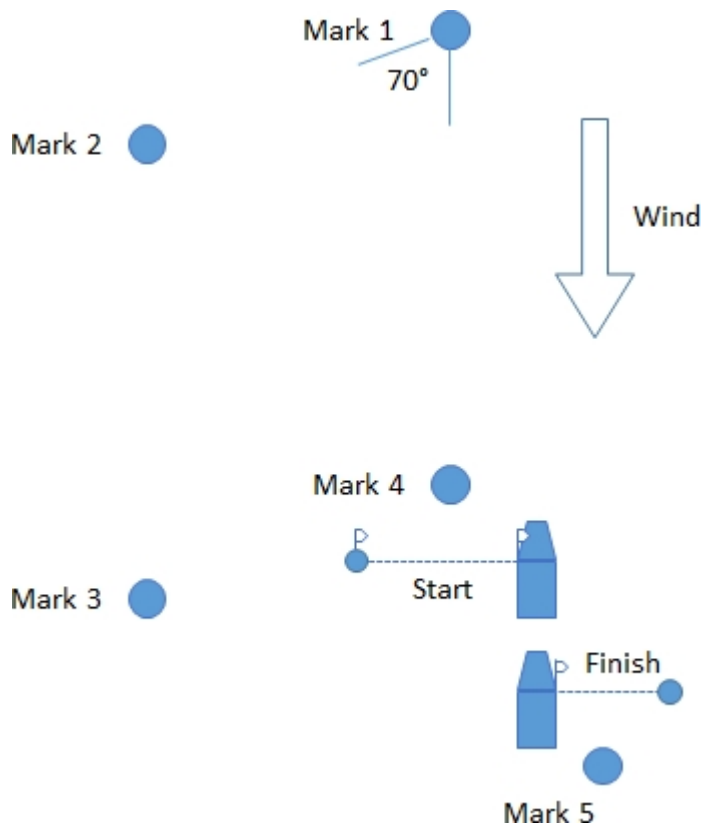
If *numeral 2* flag is shown together with the warning signal the following course shall be sailed:
Start – 1 – 2 – 3 – 2 – 3 – 2 – 3 – finish.

And so on for *numeral 3 – 6* flags

All marks shall be rounded to port.

B.4 Racing Area 4 (Laser)

Marks: Orange inflatable buoys.



If *numeral 1* flag is shown together with the warning signal the outer loop course shall be sailed:

Start – 1 – 2 – 3 – 2 – 3 – 5 – finish

If *numeral 2* flag is shown together with the warning signal the inner loop course shall be sailed:

Start – 1 – 4 – 1 – 2 – 3 – 5 – finish

All marks shall be rounded to port.