

**Gandsfjord Seilforening**



## **NOTICE OF RACE**

**Gandsfjord Yacht Club and**

**Norwegian Sailing Federation welcomes the Melges 24 fleet  
to:**

**Open Norwegian Championship 2016**

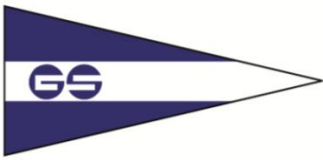
**Melges 24**

**Stavanger**

**3-5.June 2016.**

The Organizing Authority is Gandsfjord Yacht Club, supported  
by Yacht Club 1928 and Hinna Park





# Gandsfjord Seilforening



## 1. RULES

- 1.1 The regatta will be governed by the rules as defined in *The Racing Rules of Sailing*.
- 1.2 The following prescription and rules of the Norwegian Sailing Federation (NSF) will apply:
  - Norwegian Sailing Federation (NSF) rules for Norwegian Championship.
  - Scandinavian Sailing Federation prescription to RRS 30.2 and 30.3 will apply and will be stated in full in the sailing instructions.
- 1.3 The Equipment Rules of Sailing will apply.
- 1.4 The RC will use VHF radio to communicate to the fleet. Failure to make this broadcasts or failure to hear the broadcast shall not constitute grounds for granting redress. This changes RRS 62.1.
- 1.5 If there is a conflict between languages the English text will take precedence.

## 2. ADVERTISING

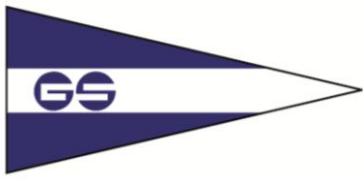
- 2.1 Advertising shall conform to the current ISAF Regulation 20 and the Class Rules.
- 2.2 Boats may be required to display identification numbers and event advertising for the duration of the event in accordance with the ISAF Regulation 20. These items will be supplied free of charge by the Organizing Authority at registration.
- 2.3 Norwegian boats displaying their own advertisement are required to show a valid advertisement license.

## 3. ELIGIBILITY AND ENTRY

- 3.1 The regatta is open to all boats of the Melges24 class that meet the obligations of the Class Rules and their National Authority, in the case that a National Authority exists.
- 3.2 Helmsman and all crewmembers on Norwegian participating boats to be member of sailing club under the Norwegian Sailing Federation, and have valid NSF sail license.
- 3.3 Entries shall be submitted by completing the online entry form at [www.seilmagasinet.no](http://www.seilmagasinet.no). Deadline for entries is May 20, 2016.
- 3.4 Later entries possible by completing the online entry form at [www.seilmagasinet.no](http://www.seilmagasinet.no). Deadline for late entries is May 31, 2016, extra late entry fee will apply, ref 4.2 (this document).



**MELGES**<sup>24</sup>  
N O R W A Y



## 4 FEES

- 4.1 The required non-refundable entry fee is NOK 1 .800, plus any bank charges and transfer fees. See invitation and entry at [www.seilmagasinet.no](http://www.seilmagasinet.no).
- 4.2 Late entries submitted by May 31, 2016, and accompanied by a late entry fee of NOK 2.500, may be accepted at the discretion of the Organizing Authority.

The entry fee includes crane lifts (launching at commencement and recovery at conclusion of the regatta) at designated times, berthing for the event and trailer storage.

## 5 MEASUREMENT AND REGISTRATION

- 5.1 All boats must register at the Race Office located at Hinna Park / Gandsfjord Yacht Club.
- 5.2 The following documents shall be presented at registration in order to complete the registration:
1. Declaration form "EGENERKLÆRING FOR NORGESMESTERSKAP 2016"
  2. Valid class certificate.
  3. Proof of insurance (ref 3.3).
  4. For Norwegian boats displaying advertisement, a valid license from NSF.
  5. For Norwegian boats, all crewmembers must display proof of membership 2016 of sailing club under the Norwegian Sailing Federation & receipt for payment of NSF sail license 2016. (ref 3.2)
- 5.3 Helmsman and crew weight will be checked at registration.

## 6 SCHEDULE

### 6.1 Registration schedule:

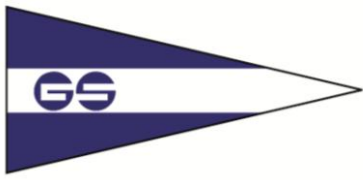
Thursday June 2.	16.30 – 21:00 hours
Friday June 3.	08:00 – 11:00 hours

### 6.2 Racing Schedule:

Day / Date / Time	Scheduled number of races
Friday June 3. Practice race according to race 1	12:00 hours
The warning signal for the first race	13:00 hours Up to 4 races
Saturday, June 4. The warning signal for the first race	11:00 hours Up to 5 races
Sunday, June 5. The warning signal for the first race	11:00 hours Up to 4 races

- 6.3 The scheduled time of the warning signal for the first race Friday is 13.00 hours
- 6.4 The schedules time of the warning signal for the first race Saturday and Sunday is 11.00 hours.
- 6.5 If numbers of competed races above number for approved Norwegian Championship: No warning signal will be given after 15:00 hours Sunday June 5. If not: No warning signal will be given after 16:00 hours Sunday June 5.
- 6.6 Maximum 10 (ten) races are scheduled for the Championship over 3 days.





## 7 MEASUREMENT AND TECHNICAL CONTROL

- 7.1 All boats shall display documents as listed in 5.2.
- 7.2 Weight, sails, safety equipment and licenses may be checked randomly before, during and after the races.

## 8 SAILING INSTRUCTIONS

The Sailing Instructions will be available at the Norwegian Championship web page in due time before the Championship, and in written format at the Race Office at time of registration.

## 9 VENUE

- 9.1 The regatta center will be situated at Hinna Park / Gandsfjord Yacht Club, Gandsfjord, Norway.
- 9.2 The races course will be held in Gandsfjord (close to Jåttåvågen) with short distance to harbor (Hinna Park) and shore, secondary courses will be in Riskafjord/Marøyhavet or Horgefjorden depending on wind conditions.

Attachment 1 shows the location of the harbor and racing areas.

## 10 COURSES

The courses to be sailed will be a Windward-Leeward configuration as shown in Attachment 2.

## 11 PENALTY SYSTEM

- 11.1 It is planned judging on the race course after Addendum Q.

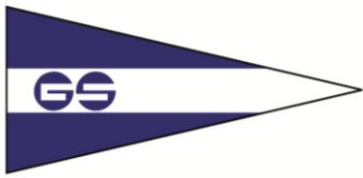
Arbitration system (simplified protest evaluation) will be used in boat to boat protest hearings. Description on procedures for arbitration system will be included in the Sailing Instructions

- 11.2 RRS 44.1 is changed so that the Two-Turns Penalty is replaced by the One-Turn Penalty, except that if the penalty is given afloat by the Jury it shall be a Two-Turns Penalty.
- 11.3 A boat that has taken penalty under rule 44 shall fill in an acknowledgement form and deliver it to the Race Office within the protest time.

## 12 SCORING

- 12.1 4 races are required to be completed to constitute a series, for valid Norwegian Championship.
- 12.2
  - a) If 4 or less races completed, a boat's total series score for the Open Norwegian Championships will be the sum of all races
  - b) When 5 to 8 more races are completed, a boat's series score for the Open Norwegian Championships will be the total of her race scores excluding her worst score (one discard).





# Gandsfjord Seilforening



- c) When 9 or more races are completed, a boat's series score for the Open Norwegian Championships will be the total of her race scores excluding her 2 (two) worst score (two discard).

## 13 PRIZES

- 13.1 The Norwegian Sail Federation's Gold, Silver and Bronze Medals will be awarded to the crew members of the top 3 Norwegian boats of the championship.
- 13.2 Gandsfjord Yacht Club will award prizes to the top 1/3 boats of the championship.

## 14 DISCLAIMER OF LIABILITY

Competitors participate in the regatta entirely at their own risk. See RRS 4, Decision to Race. The Organizing Authority will not accept any liability for material damage or personal injury or death sustained in conjunction with or prior to, during, or after the regatta.

## 15 DOCKING OF BOATS

Boats to be located in dedicated harbor at Hinna Park for venue when not racing.

## 16 HAUL-OUT RESTRICTIONS

Boats shall not be hauled out during the regatta except with and according to the terms of prior written permission of the Race Committee.

## 17 DIVING EQUIPMENT AND PLASTIC POOLS

Underwater breathing apparatus (including snorkels) and plastic pools or their equivalent shall not be used around boats between the preparatory signal of the first race and the end of the regatta.

## 18 RADIO COMMUNICATION

- 18.1 Except in an emergency, a boat shall neither make radio transmissions while racing nor receive radio communications not available to all boats. This restriction also applies to mobile telephones.
- 18.2 Race information will be given on a designated marine VHF Channel, which will be further described in the sailing instructions.

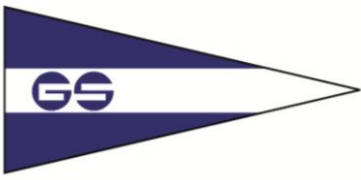
## 19 SUPPORT BOATS

- 19.1 Support boats shall be marked as decided by the Organizing Authority.
- 19.2 The IMCA Coach and Support boat appendix shall be in operation.

## 20 REPLACEMENTS

- 20.1 Substitution of competitors will only be allowed after prior written approval of the Protest Committee.





# Gandsfjord Seilforening



20.2 Substitution of damaged or lost sail or equipment will not be allowed unless approved by the Race Committee. Requests for substitution shall be made to the committee at the first reasonable opportunity.

## 21 INSURANCE

Each participating boat shall be insured with valid third-party insurance with a minimum cover of NOK 4.000.000 or the equivalent from time of arrival to time of departure from Gandsfjord Yacht Club.

## 22 LAUNCHING AND BERTHING

Crane will be available at Hinna Park.

## 23 CHANGES TO THE NOTICE OF RACE

The Organizing Authority may change the Notice of Race; see RRS 89.2(a). Any such changes will be posted on the regatta website.

## 24 COMMERCIAL SHIPPING TRAFFIC

The Organizing Authority reminds the participants that there is commercial shipping traffic in the vicinity of the race area and the participants are expected to observe the IRPCAS in relation to all such vessels.

## 25 MEDIA RIGHTS

Competitors grant the Organizing Authority an unrestricted right and permission in perpetuity to use the name and the image for any text, photograph or video footage of either themselves or the boat they are sailing during the event to be published or broadcast in any media whatsoever (including but not limited to Press and TV advertisements or Internet), for either editorial or advertising purposes or to be used in press information without any compensation to the competitor or the crew. In this respect, competitors' and crew names and any biographical material of themselves may also be used or reproduced in any way known. Gandsfjord Yacht Club is granted the right to receive any compensation that is negotiated with any third party that wish to publish, broadcast or otherwise use such material. As part of the registration process, each individual participating crewmember can be required to sign a declaration accepting this waiver of rights.

## 26 FURTHER INFORMATION AND CONTACTS

See Gandsfjord Yacht Club webpage <http://www.gandsfjordseilforening.com>,

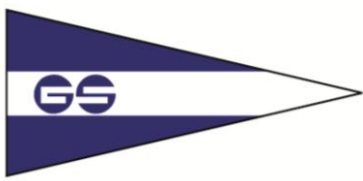
race webpage at [www.seilmagasinet.no](http://www.seilmagasinet.no)

or contact principal race officer:

Regis Rougier, email: [regis.jp.rougier@gmail.com](mailto:regis.jp.rougier@gmail.com), phone +47 907 52 676



**MELGES**<sup>24</sup>  
N O R W A Y

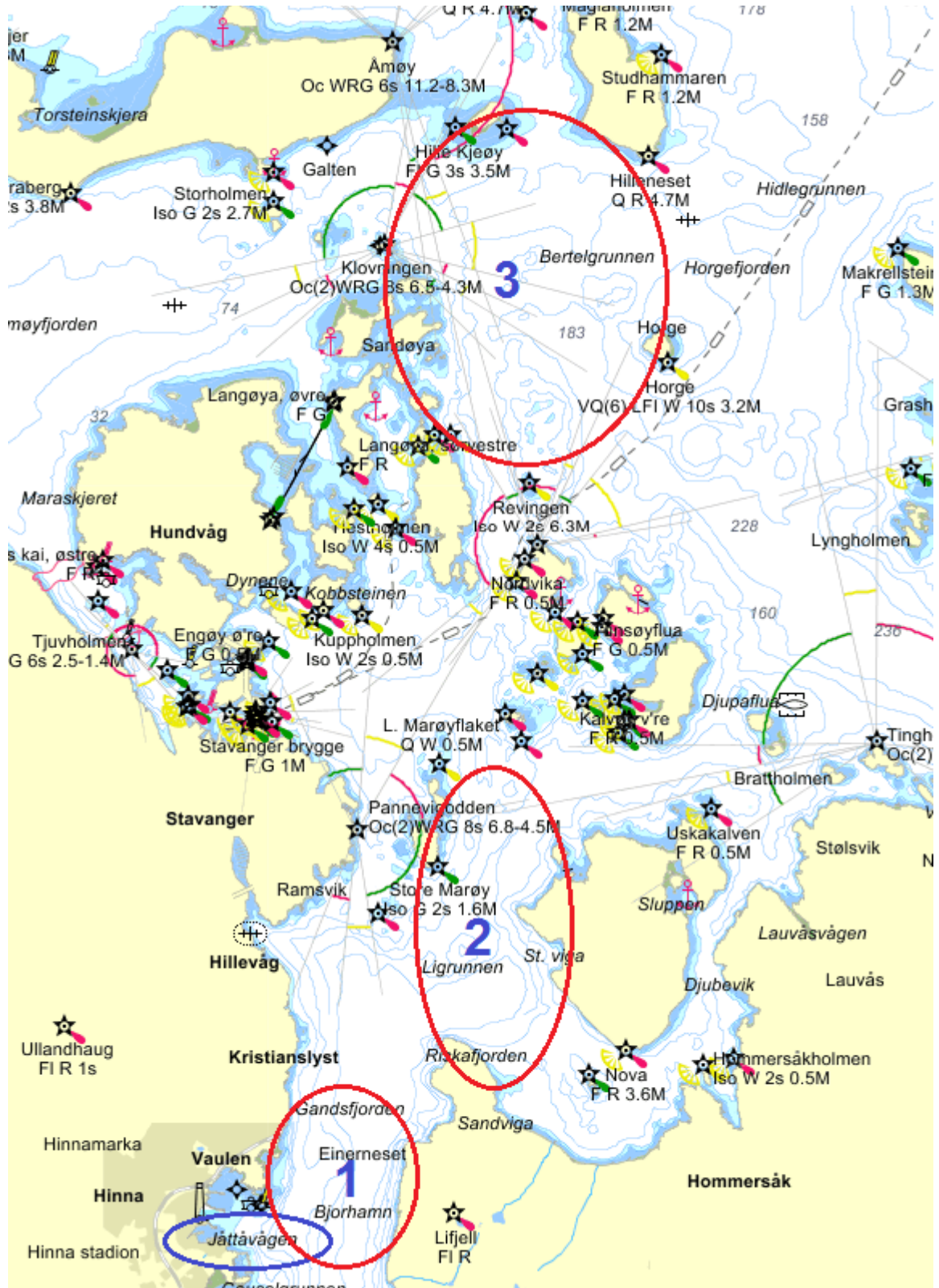


# Gandsfjord Seilforening

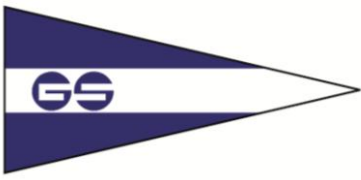


## Attachment # 1

### Melges 24 Open Norwegian Championship 2016 – Race Course 1, 2 & 3



**MELGES**<sup>24</sup>  
N O R W A Y



## Attachment # 2 – Race

Race description	Number
Race 1: Start, 1, 2, Finish	1
Race 2*: Start, 1, 2, (3a-3b), 1, 2, Finish	2
Race 3*: Start, 1, 2, (3a-3b), 1, 2, (3a-3b), 1, 2, Finish	3

### Descriptions of marks :

Mark 1 , 3a and 3b will be big yellow cylinder.

Mark 2 will be large orange round buoy.

Start / Finish marks will be buoy with yellow flags and yellow flags on the committee boat .

Mark 1, 2, to be kept to port by rounding.

The boats shall pass between Mark 3a and 3b in the direction of the course from the last mark.

