

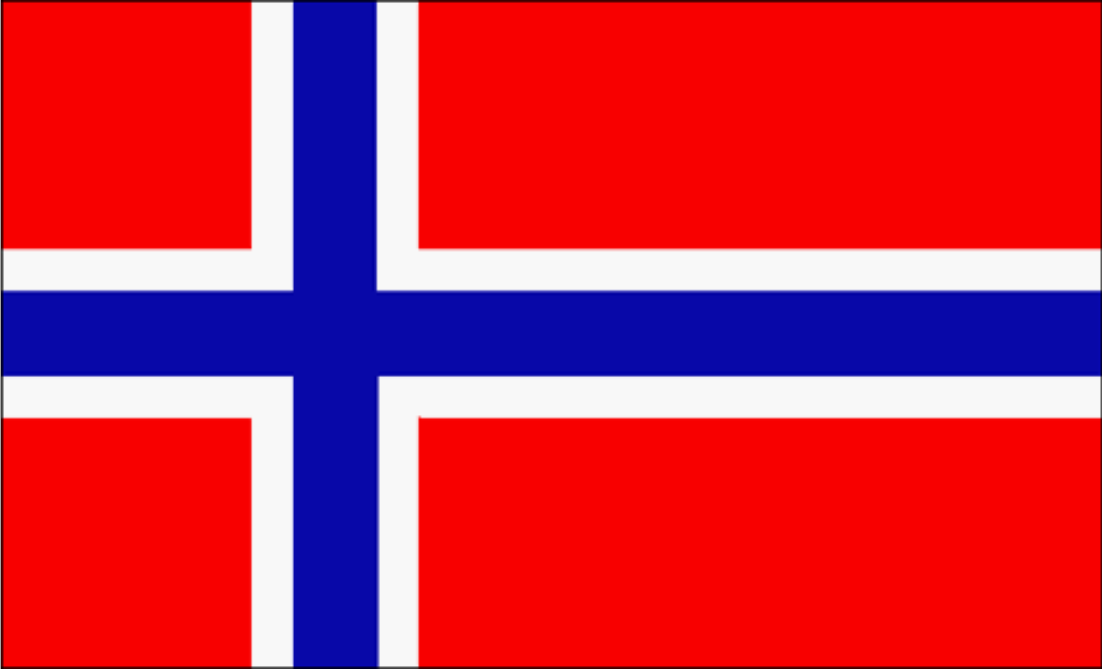
Skipper Meeting Shetland Race 2023



SHETLAND RACE

Lerwick Boating Club

24.6.2023

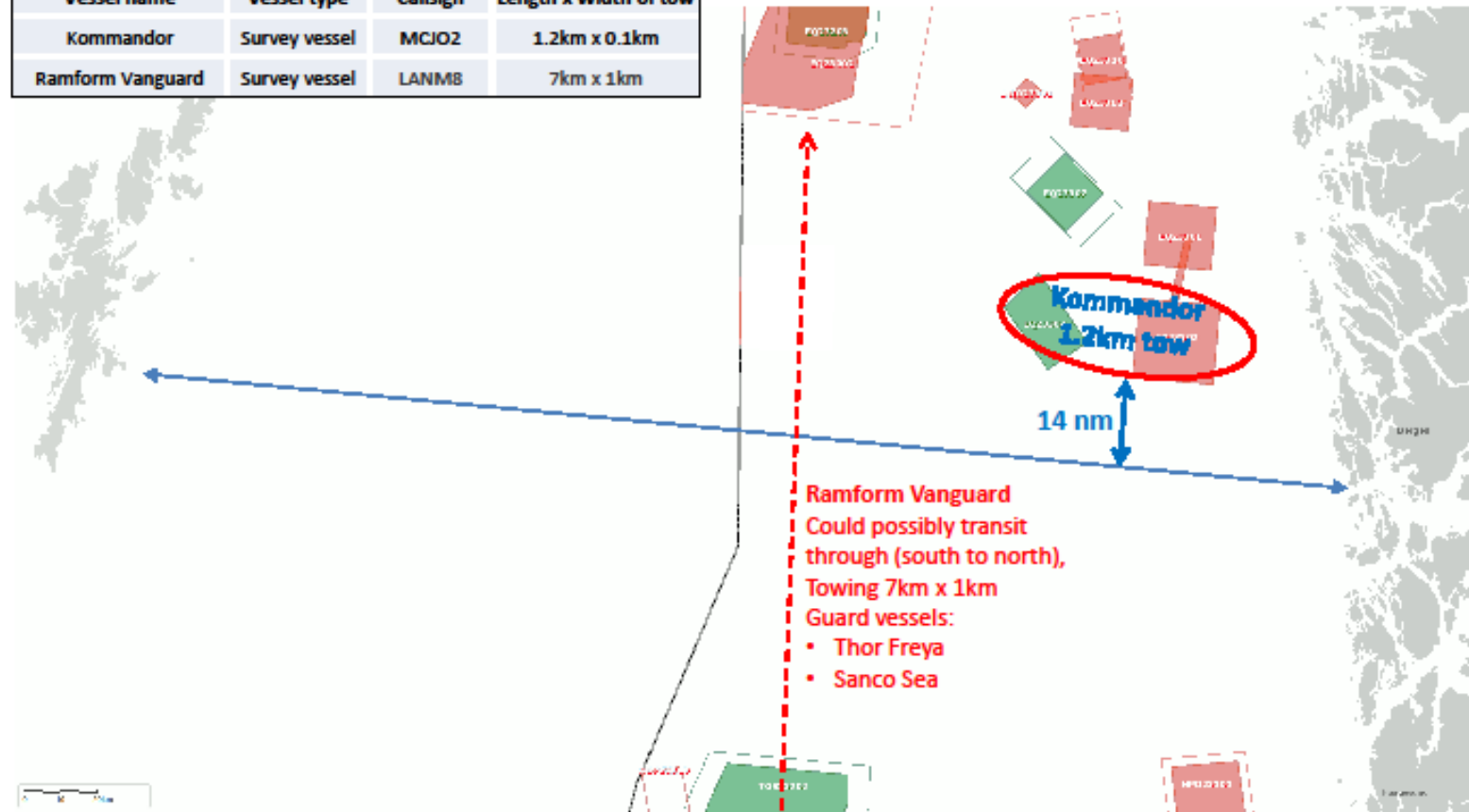


Seismic activity North Sea

Shetland Race 2023

Seismic Survey activity

Vessel name	Vessel type	Callsign	Length x Width of tow
Kommandor	Survey vessel	MCJO2	1.2km x 0.1km
Ramform Vanguard	Survey vessel	LANMB	7km x 1km



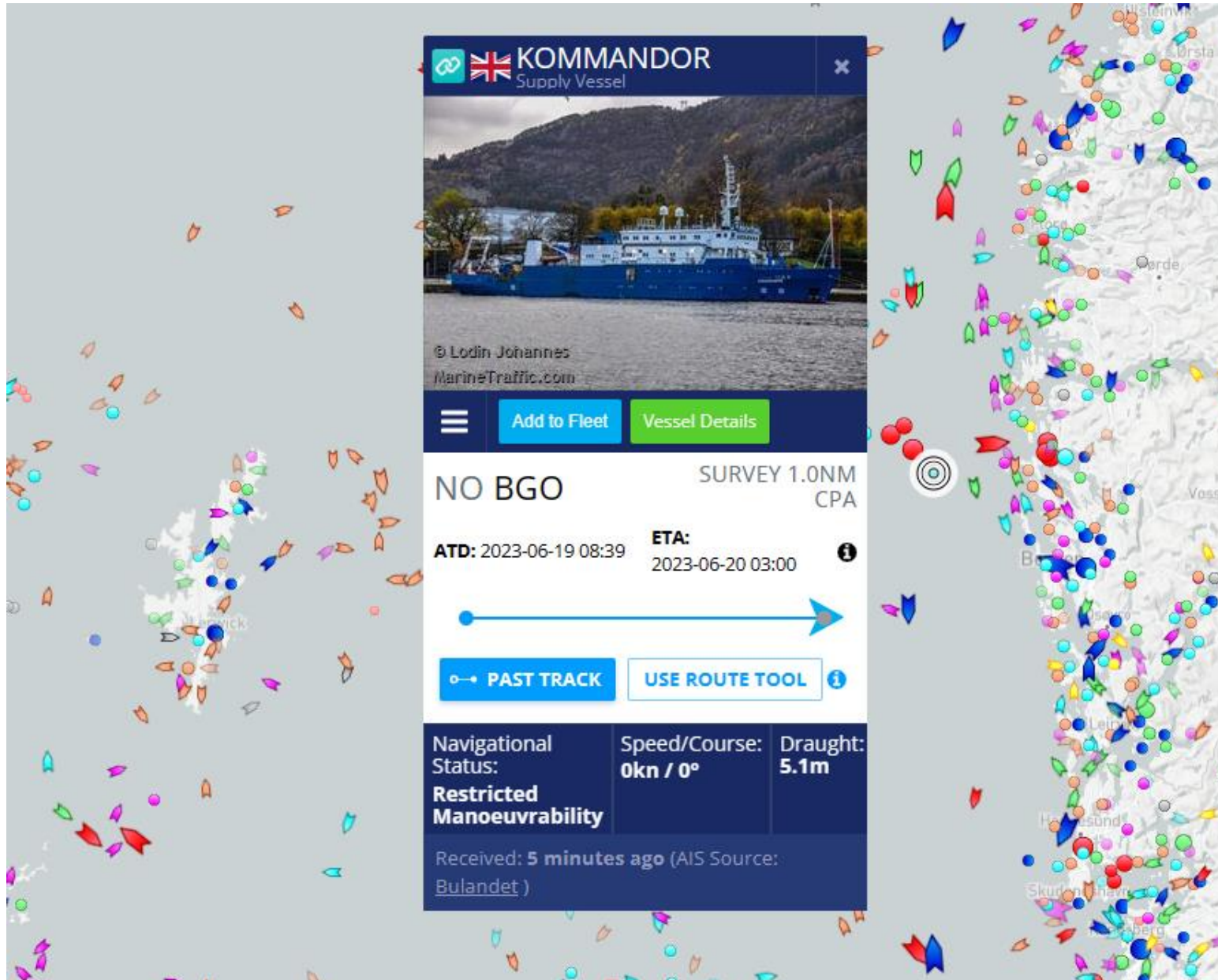
Sources:

Norwegian Sector : https://factmaps.npd.no/factmaps/3_0/

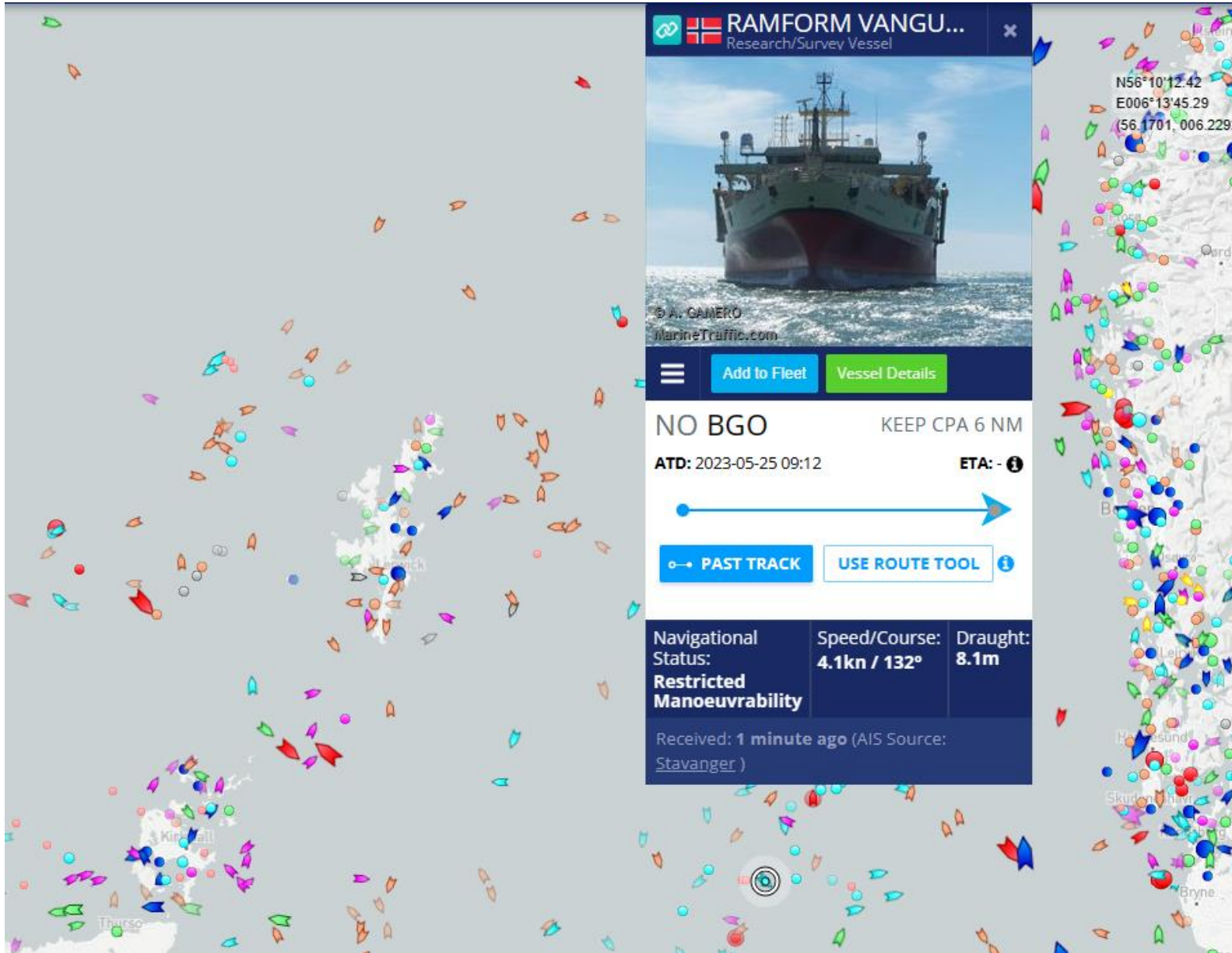
UK Sector: <https://kingfisherbulletin.org/notice-map>

Thanks to Willy Forland, skipper on S/Y Levens, for research!

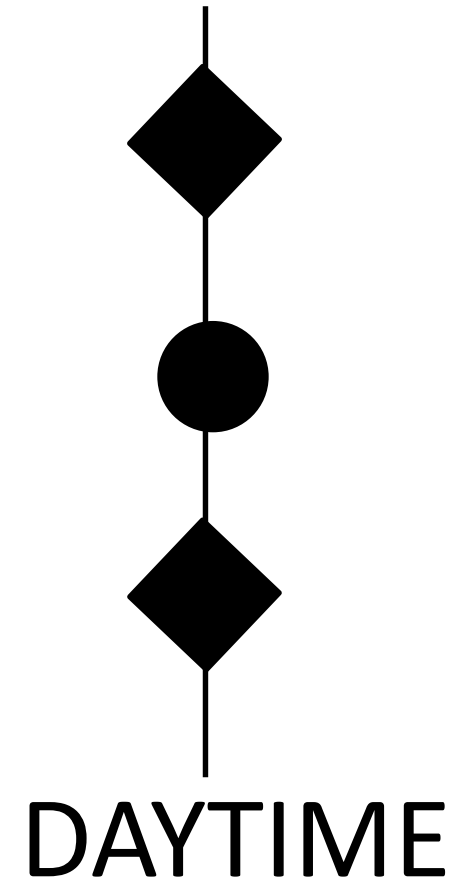
Kommandor



Ramform Vanguard



Lanterns on vessels towing seismic acquisition equipment



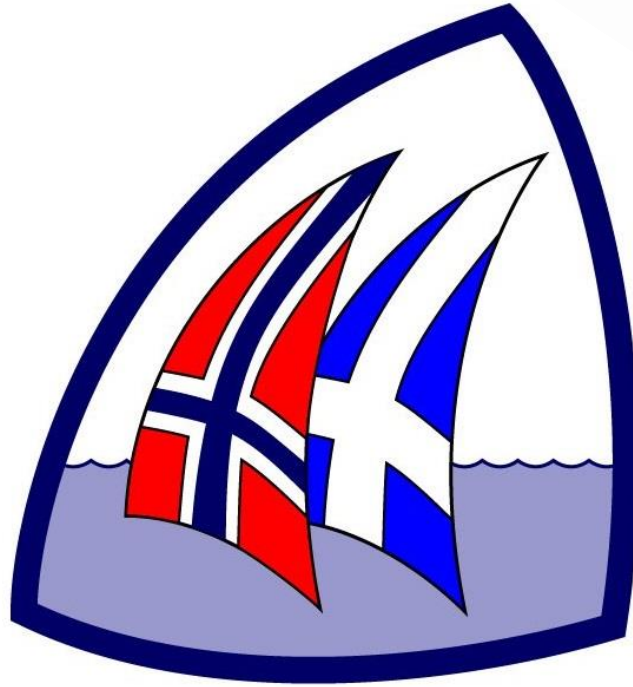


Installations in the North Sea





Instagram




#shetlandrace23

TRACKING



http://shetlandrace.no

→ ↻ 🏠 🔒 https://sailracesystem.no/regatta?regatta=3629 🔊 🔍 ☆ ⌵ ⌵ ⌵ Sign in 👤 ⋮



SHETLAND RACE


SPONSORER



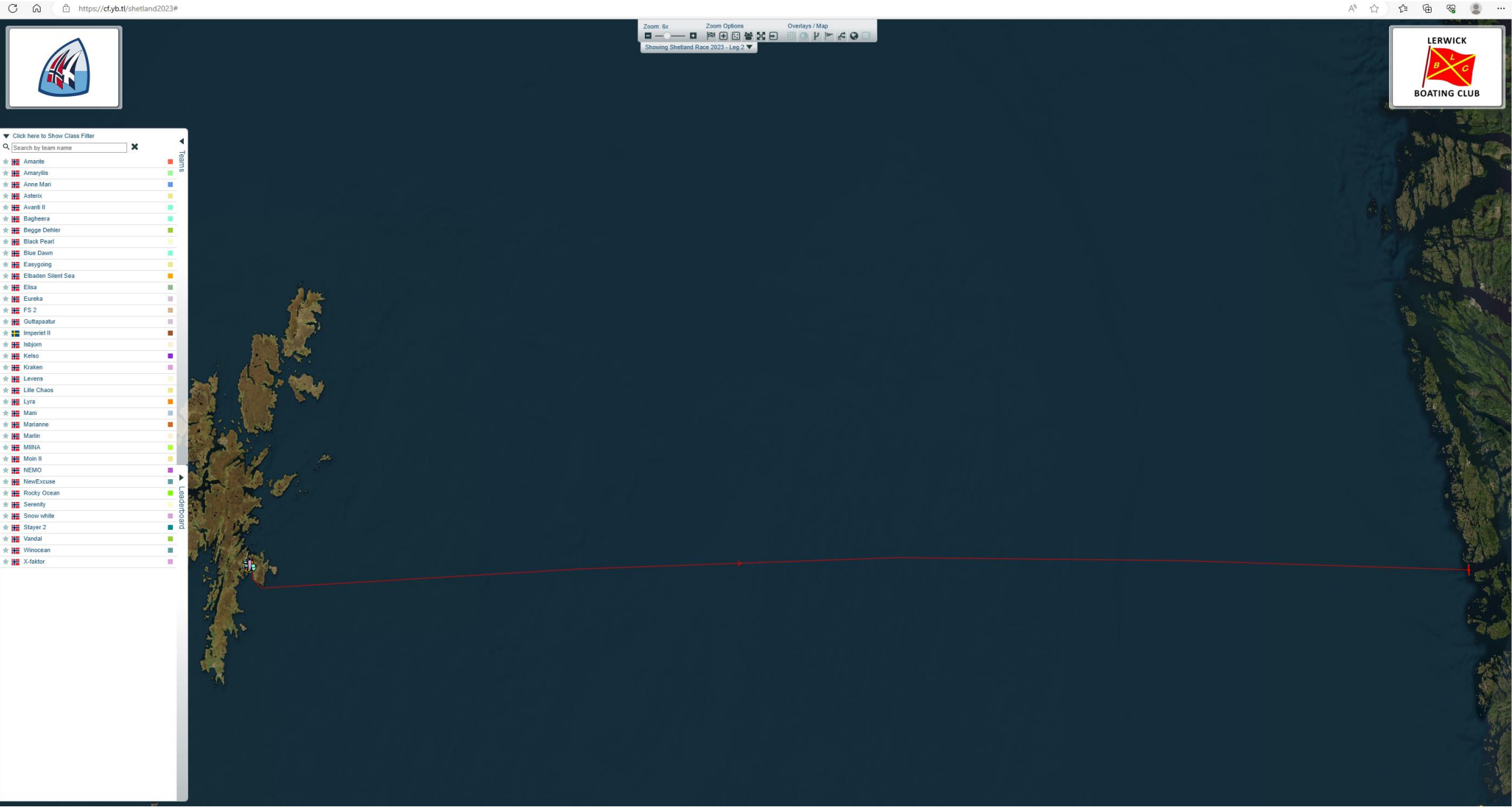
PEFORMANCE CLOTHING

MIN SIDE FRONTPAGE PARTICIPANTS START LISTS TRACKING THE REGATTA FOR PARTICIPANTS 🔒

NEWS

 **EVENT INFORMATION**

ORGANIZER: Vestland Seilkrets





Social Media

Check date and time on your photo/film device before leaving harbour. Preferably CEST.

USB memory sticks stacked with pictures and film to be delivered in Lerwick or Bergen.


Digital media can be sent to shetlandrace@gmail.com



STARTLINE

17 Starting lines


17.1 Bergen:

The starting line will be between 2 yellow buoys, or between 1 yellow buoy and the starting vessel, if it displays flag signal "M" . The starting line will be in open water north of Marsteinen, outer Korsfjorden. (SI § 33)
If the weather does not allow setting out a buoy close to Marsteinen, the lighthouse will be marking the south end of start line.


17.2 Lerwick harbour:

The starting line in Lerwick harbour will be in Bressay Sound. (SI § 37 + Appendix 1)

18 Starting systems and signals

18.1 All classes start together using class flag "D" .

18.2 Races will be started using RRS 26 with an extra attention signal 10 min. before start.

Warning signal	5 min. before start	Flag "D" displayed	one sound
Preparatory signal	4 min. before start	Flag "P"  displayed	one sound
One minute signal	1 min. before start	Flag "P" removed	one long sound
Starting signal	0 min.	Flag "D" removed	one sound

18.3 During the starting procedure, if possible, the starter will hold an open line on VHF channel 8 and do count downs.



VHF TRAFFIC

21.2 Reporting on the leg Bergen - Lerwick.

During the race west from Bergen to Lerwick the boats shall report passing longitudes or positions as declared in the following table:

Passing:	Report to:	VHF-channel
004° 00' east longitude	Kystradio Sør	03, 62
000° 00' west longitude (Zero-meridian)	Shetland Coast Guard	16 → 67
Lerwick harbour outer border (SI § 34)	Lerwick <u>Harbour</u>	12

REPORTING

Shetland Race 2023

Skipper name: _____

Note! All times to be given as Norwegian Daylight Saving Time (Norsk sommertid)

Reporting point	Yacht passed		Sign
	Date	Time	
Greenwich Meridian 0°	.06.2023	(hrs:min)	
4° East	.06.2023	(hrs:min)	
Finishing - Marsteinen	.06.2023	(hrs:min:sec)	

Date: _____ Signature: _____

[illegible]



DATA ROAMING NORTH SEA

from: Jan Åge Langeland

to: Ulv K Hjellesstad

date: 2 Jul 2018, 22:00

subject: Skip-Telenor
Maritime.

Her er det jeg nevnte om "piratnettet" til Telenor. Hvis telefonen ligger ombord med roaming på så blir det fort dyrt når email og sosiale media begynner å oppdatere av seg selv. Kanskje verdt et hint i neste års info? Det er jo mange som har roaming på nå som det er forholdsvis billig i EU.

Takk ellers for ypperlig arrangement.

Mvh
Jan-Åge

CAN BE EXPENSIVE!

QUOTE

Velkommen til Skip-Telenor Maritime. Prisinformasjon: Ringe til Norge, lokalt og mottak: 12,5/min, Data: 10/MB. Send SMS: 3,12/SMS. Alle priser er inkl.mva.

Fortsatt god reise. Hilsen Ice

UNQUOTE



HOW TO PUT ON MULTIFUNCTIONAL HEADWEAR TO OBTAIN CORRECT WEARING